

## Microlit India

629 Pakramau, Kursi Road, Lucknow 226026, India  
Phone: +91 9918625629, Email: [info@microlit.com](mailto:info@microlit.com)  
[www.microlit.com](http://www.microlit.com)

## Microlit USA

33 Wood Avenue South, Suite 600, Iselin, NJ 08830, USA  
Phone: +1 732 321 0852, Email: [info-usa@microlit.com](mailto:info-usa@microlit.com)  
[www.microlit.us](http://www.microlit.us)

## Microlit LATAM

Business Place Ibirapuera, Alameda dos Jurupis, 1005,  
Indianópolis, São Paulo, Brasil  
Phone: +55 11 93269-5932,



# MICROLIT E-BURETTE | Motor Operated Burette with 3 Calibrated Pre-set Speeds & Quick Set Feature



# EXPERIENCE PRECISION

## TABLE OF CONTENTS

1.	Intended Use of the Instrument	1
2.	Product Specifications	1
3.	Safety Instructions	2
4.	Functions and Limitations of Use	3
5.	Operating Exclusions	4
6.	Storage Conditions	5
7.	List of Recommended Reagents	6
8.	First Steps	13
9.	Initializing	16
10.	Setting Up	17
11.	Computer Connectivity	20
12.	Operating the Instrument	23
13.	Data Transfer Setup	29
14.	Error Limits	34
15.	Calibration	34
16.	Other Settings	37
17.	Cleaning and Product Maintenance	39
18.	Troubleshooting	40
19.	Return for Repairs	41
20.	Calibration Guidelines	41
21.	Warranty	41
22.	Disposal	42

## 1. Intended Use of the Instrument

MICROLIT E-BURETTE is a state-of-the-art Motor Operated Burette with sophisticated features and functionality. It is intended for use in various industries and laboratories across the globe for easy, safe and accurate titrations.

## 2. Product Specifications

Performance Data	10 ml	25 ml	50 ml
Unit Type	Microprocessor-controlled motorized piston lift system with recirculation valve		
Volume Ranges	0.005 ml - 99.99 ml (Max piston lift 10 ml, automatic addition)	0.01 ml - 250 ml (Max piston lift 25 ml, automatic addition)	0.01 ml - 500 ml (Max piston lift 50 ml, automatic addition)
Volume Accuracy	A = 0.10%, CV = 0.10%	A = 0.07%, CV = 0.05%	A = 0.05%, CV = 0.05%
Operating Temperature	+10 °C to +40 °C (from 50 °F to 104 °F)		
Power Supply	18 V, 3 A		
Battery Operation	One complete battery charge gives 3 hours (approx.) of continuous operation, (Battery capacity indicated on TFT display and charging time 6.5 hrs.)		
Quality Control	In compliance with DIN EN ISO 8655-3		
Touchscreen	4" TFT screen		
PC Interface	Mini USB Cable		
Languages	Available in 3 languages (English, Spanish, German)		

## 3. Safety Instructions

This instrument may sometimes be used for operations involving hazardous materials and equipment. It is beyond the scope of this manual to address all of the potential risks associated with its use in such applications. It is the sole responsibility of the user to consult and establish appropriate safety and health practices and determine the applicability of regulatory limitations, prior to the usage of this instrument.

 Please read the following instructions carefully.

- Read and understand this Operation Manual thoroughly before using the instrument.
- Follow general and safety instructions for hazard prevention. E.g., always wear protective clothing, protective gear for the eyes and hands.
- Carefully observe the specifications provided by reagent manufacturers.
- When dispensing inflammable fluids, avoid the built up of static charge. Make sure that you do not dispense into plastic vessels and do not wipe the instrument/equipment with a dry cloth.
- Use the instrument only for dispensing liquids, with strict regard to the defined limitations of use and operating constraints. (Refer to section 4)
- Observe operating exclusions. When in doubt, contact the manufacturer or supplier.
- Always use the instrument in such a way that neither the user nor any other person is in danger. While dispensing, the discharge tube must always point away from you or any other person. Only dispense into appropriate vessels and avoid splashes.
- Do not press the piston when the discharge tube closure is attached.
- Do not remove the discharge tube while the dispensing cylinder is being filled.
- Reagents can accumulate in the cap of the discharge tube. Thus, clean it regularly.
- Do not carry the mounted instrument by the cylinder sleeve or the valve block. Breakage or loosening of the cylinder may lead to personal injury.

- Use only original accessories and spare parts.
- Do not attempt to make any technical alterations. Do not dismantle the instrument any further than is described in the Operation Manual.
- Always check the instrument for visual damage before use.
- If there is any sign of a potential malfunction (e.g. piston difficult to move, stuck valve or leakage), immediately stop dispensing. Consult the 'Troubleshooting' section of this Operation Manual and contact the manufacturer if needed. (Refer to section 18)

## 4. Functions and Limitations of Use

MICROLIT E-BURETTE is designed for dispensing liquids directly from the reservoir bottle. It is calibrated in accordance with the guidelines of the DIN EN ISO 8655 - 3. When the instrument is correctly used, the dispensed liquid comes into contact with only the following chemically resistant materials: PTFE, FEP and Borosilicate glass.

### A. CE Marking

This sign certifies that the product meets the requirements of the EC directive and has been tested according to the specified test methods.

### B. Physical Limits

MICROLIT E-BURETTE is designed for titrating liquids, observing the following physical limits:

- Maintain instrument and reagent between +10 °C to +40 °C (from 50 °F to 104 °F).
- Maintain reagent vapor pressure up to 600 mbar (maximum). Aspirate slowly above 300 mbar in order to prevent the liquid from boiling.
- Kinematic viscosity upto 500 mm<sup>2</sup>/s.  
(dynamic viscosity [mPas] = kinematic viscosity [mm<sup>2</sup> /s] x density [g/cm<sup>3</sup>])

- Relative air humidity between 20% and 90%.
- Use fluids with density upto 2.2 g/cm<sup>3</sup>.

## C. Operating Limitations

- Chlorinated and fluorinated hydrocarbons or chemical combinations which form deposits may make it difficult for the piston to move or jam it. If the piston becomes too difficult to move, immediately clean the instrument. (Refer to section 17)
- While dispensing inflammable fluids, avoid the built up of static charge. Make sure that you do not dispense into plastic vessels and do not wipe instruments with a dry cloth.
- MICROLIT E-BURETTE is designed for general laboratory applications and complies with relevant standards, like DIN EN ISO 8655-3. Please check the compatibility of the instrument for a specific application (e.g. trace material analysis, food sector etc.). Approvals for specific applications, like production and administration of food, pharmaceuticals and cosmetics are not available.

## 5. Operating Exclusions

- Do not use the instrument with:
- Liquids that attack FEP, PFA and PTFE (e.g. dissolved Sodium Azide).
- Liquids that attack borosilicate glass (e.g. Hydrofluoric acid).
- Hydrochloric acid > 40%.
- Tetrahydrofuran or Oxolane.
- Trifluoroacetic acid.
- Explosive liquids (e.g. Carbon Disulfide).
- Suspensions (e.g. of charcoal) as the solid particles may clog or damage the instrument.

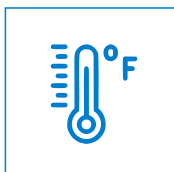
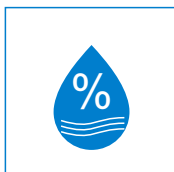


- Liquids that attack PP (cap).
- An aggressive atmosphere, e.g. HCl fumes.

\* The permissible concentration of dissolved Sodium Azide is not more than 0.1%.

## 6. Storage Conditions

Store the instrument and accessories in a clean, cool and dry place. Storage temperature from -20 °C to +50 °C (from -4 °F to 122 °F) is advised with relative humidity between 5% and 95%.



## 7. List of Recommended Reagents

### Chemicals from A to Z

The following list includes most frequently used chemicals.

It provides useful information for the safe and adequate use of the E-Burette. However, safety precautions and recommendations in operation manual must be followed carefully.

### Code explanations

A = Good resistance

B = Acceptable with limitations

C = Not recommended

1 = Aggressive liquid vapours (better resistance with lower concentration) may cause corrosion of electronic motor.

Do not leave the E-Burette on the bottle. Run the E-Burette with distilled water after usage.

2 = Risk of damage, softening or discoloration of external parts through vapours.

Do not leave the E-Burette on the bottle. Run the E-Burette with distilled water after usage.

3 = Chemical deposition on the barrel surface which may restrict the movement of piston.

Do not leave the E-Burette on the bottle. Run the E-Burette with distilled water after usage.

4 = Chemical degradation of glass parts (plunger/barrel).

## List of Reagents

Chemicals A - Z	
A	
Acetaldehyde (Ethanal)	A
Acetic acid 96%	B/1/2
Acetic acid 100% (glacial)	B/1/2
Acetic anhydride	B/1/2
Acetone (Propanone)	B/2
Acetonitrile (MECN)	A
Acetophenone	B/2
Acetyl Chloride	B/2
Acetylacetone	B/1
Acrylic acid	B/1
Acrylonitrile	B/1/2
Adipic acid	A
Allyl alcohol	A
Aluminum chloride	B/1
Amino acids	A
Ammonia 20%	B/1/2
Ammonia 20-30%	B/1/2
Ammonium chloride	B/1
Ammonium fluoride	B/1
Ammonium molybdate	B/1
Ammonium sulfate	B/1
Amyl alcohol (Pentanol)	A
Amyl chloride (Chloropentane)	B/1/2
Aniline	A
Ascorbic acid	A
n-Amyl acetate	B/2
B	
Barium chloride	A
Benzaldehyde	A
Benzene	B/2
Benzine	A
Benzoyl chloride	B/2
Benzyl alcohol	A
Benzyl chloride	B/2
Bis(2-ethylhexyl) phthalate	B/2
Boric acid 10%	A
Bromine	C/1/2
Bromobenzene	B/2
Bromonaphthalene	A
Butanediol	A
Butanol	A
Butyl acetate	B/2
Butyl methyl ether	B/2
Butylamine	B/2
Butyric acid	B/2
C	
Calcium carbonate	B/3
Calcium chloride	B/3
Calcium hydroxide	B/3
Calcium hypochlorite	B/3

## List of Reagents

Chemicals A - Z	
Carbon disulfide	B/2
Carbon tetrachloride	B/2
Chlorine dioxide	B/2
Chlorine water	B/2
Chloro naphthalene	B/2
Chloroacetaldehyde 45%	A
Chloroacetic acid	B/2
Chloroacetone	B/2
Chlorobenzene	B/2
Chlorobutane	B/2
Chloroethanol	B/2
Chloroform (Trichloromethane)	B/1/2
Nitro-hydrochloric acid (Aqua regia)	B/1/2
Chlorosulfonic acid	B/1/2
Chlorosulfuric acid 100%	B/1/2
Chromic acid 100%	B/1/2
Chromosulfuric acid 100%	C/1/2
Citric acid	A
Copper fluoride	A
Copper sulfate	A
Covi-Ox-T70/ Mixed Tocopherol	A
Cresol	A
Cumene (Isopropylbenzene)	B/2
Cyanoacrylate	A
Cyclohexane	B/2
Cyclohexanone	B/2
Cyclopentane	B/2
D	
1,2-Diethylbenzene	B/2
1,4-Dioxane (Diethylene dioxide)	B/2
1-Decanol	A
Decane	A
Di-(2-ethylhexyl) peroxydicarbonate	B/2
Dibenzyl ether	B/2
Dichloroacetic acid	B/2
Dichlorobenzene	B/1
Dichloroethane	A
Dichloroethylene	B/2
Diesel oil (Heating oil)	A
Diethanolamine	A
Diethylamine	B/2
Diethylene glycol	A
Diethylether	B/2
Dimethylacetamide	A
Dimethyl sulfoxide (DMSO)	B/1/2
Dimethylaniline	A
Dimethylformamide (DMF)	B/1/2

## List of Reagents

Chemicals A - Z	
E	
Ethanol	A
Ethanolamine	B/2
Ether	B/2
Ethyl acetate	B/2
Ethylbenzene	B/2
Ethylene chloride	B/2
Ethylene diamine	A
Ethylene glycol	A
F	
Fluoroacetic acid	B/1/2
Formaldehyde (Formalin)	A
Formamide	A
Formic acid	B/1/2
G	
Gamma-butyrolactone	A
Gasoline	B/2
Glycerin <40%	A
Glycolic acid 50%	A
H	
Heating oil (Diesel oil)	A
Heptane	A
Hexane	A
Hexanoic acid	A
Hexanol	A
Hydriodic acid	B/1/2
Hydrobromic acid	B/1/2
Hydrochloric acid 20% (HCl)	B/1
Hydrochloric acid 37% (HCl)	B/1
Hydrofluoric acid (HF)	C/4
Hydrogen peroxide	B/2
I	
Iodine	B/1/2
Iodine bromide	C/1/2
Iodine chloride	C/1/2
Isoamyl alcohol	A
Isobutanol	A
Isooctane	A
Isopropanol	A
Isopropyl ether	B/2
Iso-propylamine	B/2
K	
Kerosene	A
L	
Lactic acid	B/2
M	
2-Methoxyethanol	A
Methanol	A
Methoxybenzene (Anisol)	B/2
Methyl benzoate	B/2
Methyl chloride (Chloromethane)	B/2

## List of Reagents

Chemicals A - Z	
Methyl ethyl ketone (MEK/Butanone)	B/2
Methyl formate	A
Methyl iodide (Iodomethane)	B/1/2
Methyl methacrylate (MMA)	B/2
Methyl propyl ketone (2-Pentanone)	A
Methyl tert-butyl ether	B/2
Methylene chloride (Dichloromethane) (DCM)	B/1/2
Methylpentanone	A
Mineral oil (engine oil)	A
Monochloroacetic acid	B/2
N	
Nitric acid 100%	B/1
Nitric acid 30-70%	B/1
Nitric acid dil. <30%	B/1
Nitrobenzene	B/1/2
Nitromethane	B/2
N-methyl-2-pyrrolidone (NMP)	A
O	
Octane	A
Octanol	A
Oil (vegetable, animal)	B/2
Oil of turpentine	B/2
Oleic acid	B/1/2
Oleum (Fuming Sulfuric acid)	B/1/2
Oxalic acid	B/2
P	
Pentane	B/2
Peracetic acid	B/2
Perchloric acid 100%	B/1/2
Perchloric acid diluted	B/1/2
Perchloroethylene	B/2
Petroleum	B/2
Petroleum ether / spirit	B/2
Phenol	A
Phenylethanol	B/2
Phenylhydrazine	B/2
Phosphoric acid 100%	B/1
Phosphoric acid 85%	B/1
Piperidine	B/2
Potassium chloride	B/2
Potassium dichromate	B/1/2
Potassium dihydrogen phosphate	B/1/2
Potassium hydroxide	B/3
Potassium iodide	B/1/2
Potassium permanganate (persulfate)	B/1/2
Potassium peroxydisulfate	B/1/2
Potassium sulfate	B/1/2
Propionic acid (Propanoic acid)	B/2
Propylene glycol (Propane-1,2-diol)	A

## List of Reagents

Chemicals A - Z	
Propylene oxide	A
Picric acid (Trinitrophenol)	B/2
Pyridine	B/2
Pyruvic acid	A
R	
Resorcin	A
S	
Salicylaldehyde	A
Scintillation fluid	A
Silver acetate	B/1/2
Silver nitrate	B/1/2
Sodium acetate	B/1/2
Sodium chloride (kitchen salt)	B/3
Sodium dichromate	B/1/2
Sodium fluoride	B/1/2
Sodium hydroxide 30%	B/3
Sodium hypochlorite	B/3
Sodium thiosulfate	B/3
Sulfonitric acid 100%	B/1/2
Sulfur dioxide	B/1/2
Sulfuric acid 100%	B/1/2
Sulfuric acid <10%	B/1
Sulfuric acid (10-75%)	B/1
Sulfuric acid (Cold conc.)	B/1/2
Sulfuric acid (Hot conc.)	B/1/2
T	
1,1,2-Trichlorotrifluoroethane	B/2
Tartaric acid	B/1
Tetrachlorethylene	B/2
Tetrahydrofuran (THF)	B/2
Tetramethylammonium hydroxide	B/3
Toluene	B/2
Trichlorethylene	B/2
Trichloroacetic acid	B/2
Trichlorobenzene	B/2
Trichloroethane	B/2
Triethanolamine	B/2
Triethylamine	B/2
Triethylene glycol	A
Trifluoroacetic anhydride (TFAA)	B/1/2
Trifluoromethane (Fluoroform)	B/1/2
U	
Urea	A
X	
Xylene	B/2
Z	
Zinc chloride 10%	B/3
Zinc sulfate 10%	B/3



Product Description

## 8. First Steps

First and foremost – check whether everything is there in the package.

**Verify that the package includes:**

1.

Fig. 8.1



Operation Manual  
(Fig. 8.1)

2.

Fig. 8.2



10ml, 25ml or 50 ml MICROLIT E-BURETTE  
(Fig. 8.2)

3.

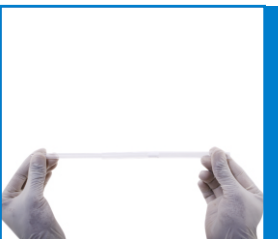
Fig. 8.3



Control Panel  
(Fig. 8.3)

4.

Fig. 8.4



Telescopic Tube  
(Fig. 8.4)

5.

Fig. 8.5



Bottle Adapters (28, 32, 38, 40, 45 mm)  
(Fig. 8.5)

6.

Fig. 8.6



Charging AC Adaptor  
(Fig. 8.6)

7.

Fig. 8.7



Control Panel Stylus  
(Fig. 8.7)

8.

Fig. 8.8



USB Drive for software & driver  
(Fig. 8.8)

9.

Fig. 8.9



Mini USB Cable  
(Fig. 8.9)

10.

Fig. 8.10



Portable Printer

(Fig. 8.10)

Note: The product package does not include mini portable dot matrix printer; all accessories are sold separately.

11.

Fig. 8.11

RS232 printer cable  
(Fig. 8.11)

12.

Fig. 8.12

Extra Amber Coloured Windows  
(Fig. 8.12)

13.

Fig. 8.13

Calibration Certificate  
(Fig. 8.13)

14.

Fig. 8.14

14.4 V, 2000 mAh Li-ion Rechargeable Batteries  
(Fig. 8.14)

## 9.

## Initializing

## Connecting the batteries

1.

Fig. 9.1



Open the battery panel at the back of the control panel.  
(Fig. 9.1)

2.

Fig. 9.2



Connect the batteries to the panel wire by inserting the battery connector into the panel connector firmly. It locks with a 'click' sound.  
(Fig. 9.2)

3.

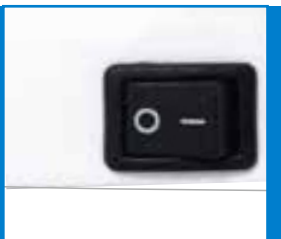
Fig. 9.3



Close the panel  
(Fig. 9.3)

4.

Fig. 9.4



Press the ON/OFF button at the side of the panel.  
(Fig. 9.4)

5.

Fig. 9.5



The screen will display 'Welcome'.  
(Fig. 9.5)

#### NOTE:

In order to replace the batteries, press the lock button to disengage the battery lock and remove the old batteries.

## 10. Setting Up

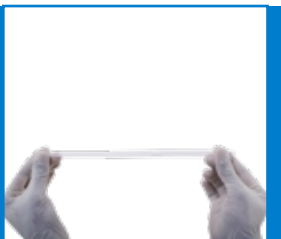
### 10. A. E-Burette Setup

### 10. B. Portable Printer Setup

#### 10.A. E-Burette Setup

A1.

Fig. 10.A1



Adjust the length of the Telescopic tube (FEP tube) to fit your particular reservoir.  
If you require a longer tube, it is provided on request.  
(Fig. 10.A1)

A2.

Fig. 10.A2



Fix the Telescopic tube as shown. The tube's ends have different diameters - fix it from the wider end.  
(Fig. 10.A2)

A3.

Fig. 10.A3



Choose the correct adapter for the bottle.  
The threaded platform base of MICROLIT E-BURETTE has a 30 mm screw thread. Five adapters are supplied to suit containers with a 28, 32, 38, 40, 45 mm and 30 mm (inbuilt adapter) screw neck.  
(Fig. 10.A3)

A4.

Fig. 10.A4



Fix the adapter on the reservoir bottle by screwing it in clockwise direction.  
(Fig. 10.A4)

A5.

Fig. 10.A5



Mount the instrument. Screw it to the reservoir by applying gentle hand torque applied to the threaded platform base only. In case of removal, apply the same technique to the base, in the opposite direction.  
(Fig. 10.A5)

A6.

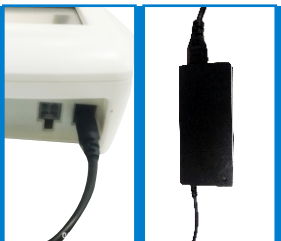
Fig. 10.A6



Connect the cable from the instrument housing to the port at the back of the control panel with a firm push, as shown. Check for the cable position.  
The flat surface of the connector with an arrow mark will face down.  
(Fig. 10.A6)

A7.

Fig. 10.A7



If charging is required, insert the charging pin at the back of the control panel and connect the power cord with the AC adaptor firmly and then plug the two pin power cord to the 220 V power supply.  
(Fig. 10.A7)

A8.

Fig. 10.A8



The battery indicator will show the charging symbol.  
(Fig. 10.A8)



A9.

Fig. 10.A9



The E-Burette is now ready to be switched on. Press the ON button (of the ON/OFF button) at the side of the control panel to switch on the control panel.  
(Fig. 10.A9)

## A10. Transporting the instrument

Fig. 10.A10



When mounted to a reagent bottle, always carry the instrument as shown and always store it in the upright position.  
(Fig. 10.A10)

## 10.B. Portable Printer Setup

Fig. 10.B1



To setup the Portable printer, insert the slip roll inside the printer.

1. Now, connect the printer cable to the back of the burette panel via RS32 cable provided. (Fig.10.B1)
2. Switch ON the printer via power cable to the main socket.

## 11. Computer Connectivity

### 11.A. Installing the Driver

### 11.B. Installing the instrument software

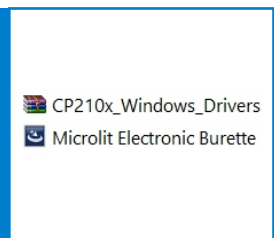
Insert the pen drive provided with the package in your PC/Laptop for driver files and software.  
Please note that there are two set up files in the pen drive.

- CP210x\_Windows\_Drivers
- E-Burette Setup Files

### 11.A. Installing the Driver

A1.

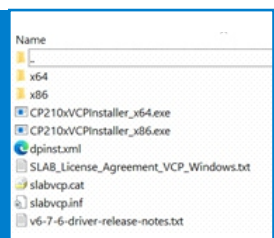
Fig. 11.A1



Double click the CP210x\_Windows\_Drivers setup icon.  
(Fig. 11.A1)

A2.

Fig. 11.A2

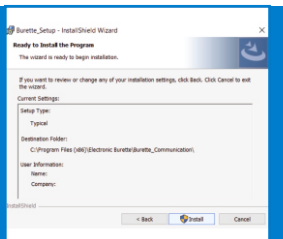


Download the setup files by double-clicking the Installer  
For Windows 7 or less, download CP210xVCPInstaller\_x86.exe.  
For Windows 8 or above, download CP210xVCPInstaller\_x64.exe.  
(Fig. 11.A2)



A3.

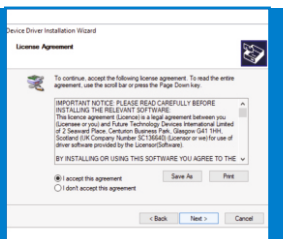
Fig. 11.A3



Click the Next button for installing the device driver.  
(Fig. 11.A3)

A4.

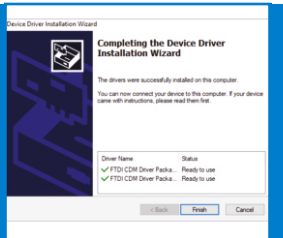
Fig. 11.A4



Click to accept the licence agreement.  
(Fig. 11.A4)

A5.

Fig. 11.A5

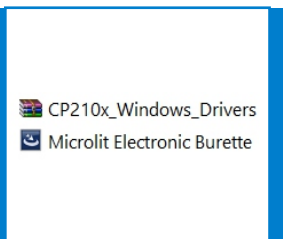


Then, click the Finish button on the  
device driver installation wizard.  
(Fig. 11.A5)

## 11.B. Installing the instrument software

B1

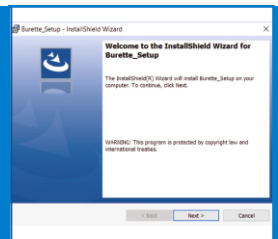
Fig. 11.B1



Double click the E-BURETTE setup icon.  
(Fig. 11.B1)

B2.

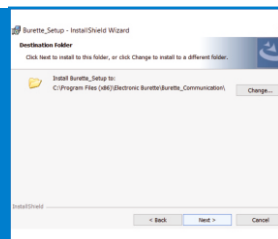
Fig. 11.B2



Click Next to start the Install Shield Wizard for  
MICROLIT Communication window.  
(Fig. 11.B2)

B3.

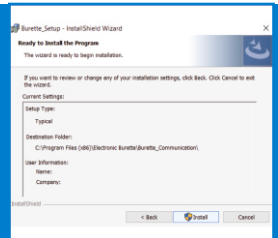
Fig. 11.B3



Click Next to choose the destination  
folder of the software files.  
(Fig. 11.B3)

B4.

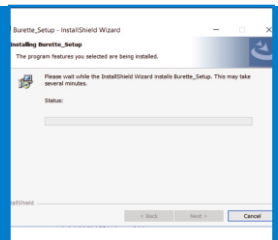
Fig. 11.B4



Click Install for the ready to install program window.  
(Fig. 11.B4)

B5.

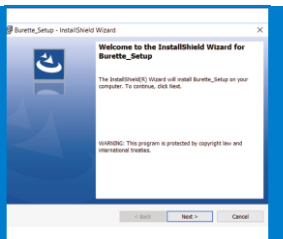
Fig. 11.B5



Click Next for the user account control window.  
(Fig. 11.B5)

B6.

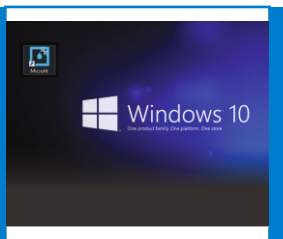
Fig. 11.B6



Click Finish for the Install Shield Wizard completion window.  
(Fig. 11.B6)

B7.

Fig. 11.B7



MICROLIT Communication icon will then appear on the desktop.  
(Fig. 11.B7)

## 12. Operating the instrument

### 12. A. Switch on the Control Panel

### 12. B. Purging

### 12. C. Titration

### 12. D. Sensitive Media

### 12. A. Switch on the Control Panel

A1.

Fig. 12.A1



Switch on the instrument using the ON/OFF switch at the back of the control panel.  
(Fig. 12.A1)

A2.

Fig. 12.A2



When it boots, the instrument will warn the user to switch the knob to recirculation mode.  
(Fig. 12.A2)

A3.

Fig. 12.A3



Turn the knob to re-circulation mode and click the tick mark (✓) on the control panel screen when ready.  
(Fig. 12.A3)

A4. The instrument will reset automatically. It is now ready to use.

### 12. B. Purging

⚠ This step is recommended before using the Burette to ensure bubble free dispensing.

B1.

Fig. 12.B1



Click on the purging mode from the Home Screen on the control panel. (Fig. 12.B1)

B2.

Fig. 12.B2



The screen on the control panel will warn the user to turn the knob to re-circulation mode. (Fig. 12.B2)

B3.

Fig. 12.B3



Turn the knob to Recirculation mode and click the tick mark (✓) on the control panel screen when ready. (Fig. 12.B3)

B4. The E-BURETTE will purge automatically. If the device is still not properly purged, go to Step-1 and repeat the procedure till no large air bubble is visible below the piston.

⚠ A few air bubbles up to 1 mm in size are permissible.

## 12.C. Titration

⚠ Wear protective clothing, protective gear for the eyes and hands. Liquid may accumulate in the cap. Follow all safety instructions and observe limitations of use and operating constraints. (Refer to section 4 and 5)

C1.

Fig. 12.C1



Remove cap from the discharge tube. (Fig. 12.C1)

C2.

Fig. 12.C2



Click on the Titration mode on the home screen. (Fig. 12.C2)

C3. The screen on the control panel will warn the user to turn the knob to titration mode.

C4.

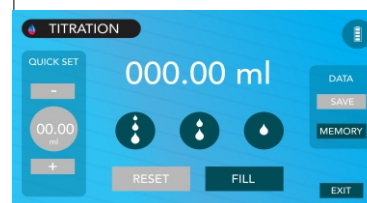
Fig. 12.C4



Turn the knob clockwise to set at titration mode and click the tick (✓) mark on the screen of the control panel when ready. (Fig. 12.C4)

C5. Place the discharge tube orifice against the inner wall of a suitable receiving vessel.

C6.



Now, fill the barrel of the burette by clicking on the FILL button on the titration screen. (Fig. 12.C6)

C7.



By pressing the STOP button, the filling volume can be stopped as and when you need to. (Fig. 12.C7)

\*The 'grey' color shows that the function is disabled

C8.



Once the burette is filled, the FILL button will be disabled, which means the burette cannot be filled further. (Fig. 12.C8)

C9. To dispense the liquid, three dispensing speeds are provided, including drop-wise dispensing, which allows the user to achieve the end point very accurately by dispensing one drop on a single click.

Note: The one-touch-one drop dispensing is enabled and applicable only for 50 ml and 25 ml burette.

C10. Three dispensing speeds are provided, including drop-wise dispensing, which allows the user to achieve the end point very accurately.



#### Fast mode

In this mode, the dispensing speeds are :

Model	Capacity	Dispensing Speed
TI-50	50 ml	3.8 ml/sec
TI-25	25 ml	2.1ml/sec
TI-10	10 ml	1.2 ml/sec



#### Medium mode

In this mode, the dispensing speeds are :

Model	Capacity	Dispensing Speed
TI-50	50 ml	1.3 ml/sec
TI-25	25 ml	0.7 ml/sec
TI-10	10 ml	0.2 ml/sec

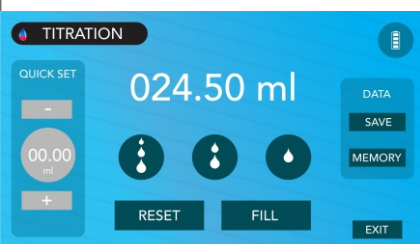


#### Dropwise mode

In this mode, the dispensing speeds are :

Model	Capacity	Dispensing Speed
TI-50	50 ml	10 µl/click
TI-25	25 ml	10 µl/click
TI-10	10 ml	5 µl/click

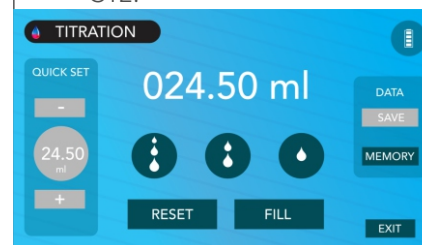
C.11



Once the dispensing is complete, the RESET and SAVE button will be enabled.

(Fig. 12.C11)

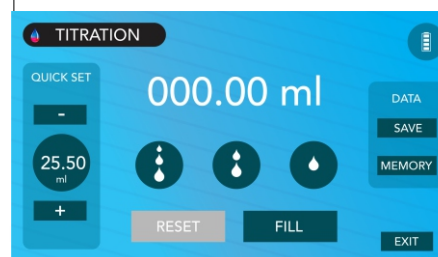
C12.



Now when you click on SAVE, the dispensed reading will be transferred to QUICK SET button. Now the SAVE button is disabled which signifies that the reading cannot be saved again. (Fig. 12.C12)

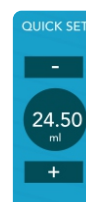
The reading saved into the memory will be transferred to the Quick Set which will be considered as the last titration value.

C13.



To activate the Quick Set button, reset the screen. RESET button simply tares the reading displayed on the screen. (Fig. 12.C13)

C14.



When you go to the QUICK SET feature, you can adjust the amount by 10 µl using + and - button. Quick Set button allows the user to dispense a certain amount of liquid in one go. (Fig. 12.C14)

Once the Quick Set button dispenses the amount, the user can continue the titration process from the same point.

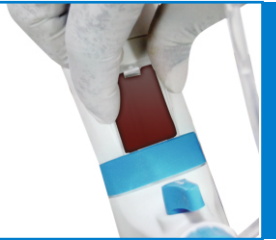
Note: If the titration value is more than the barrel's capacity, simply save the value to Quick Set. Now, the burette will fill and dispense until the saved value is achieved.

12.D. Sensitive Media

For light-sensitive media (e.g., Iodine, Potassium Permanganate and Silver Nitrate solutions), we recommend the use of ‘Amber Coloured Windows’ or the inspection windows provided in the box.

D1.

Fig. 12.D1



To replace the inspection window, unclip the default inspection window by pressing it from its top and then removing it.  
(Fig. 12.D1)

D2.

Fig. 12.D2



Place the Amber Coloured Window in the slot provided at the bottom of the housing and press it down until you hear a click sound.  
(Fig. 12.D2)

13. Data Transfer Setup

- 13.A. Connecting the USB Mini Cable
- 13.B. Software Initialization
- 13.C. Memory
- 13.D. Exit

13.A. Connecting the USB Mini Cable

A1.

Fig. 13.A1



Connect the Mini USB cable from the control panel to your PC/Laptop for transferring and storing the control panel’s data on the latter.  
(Fig. 13.A1)

A2.

Fig. 13.A2



Insert the wider end of the USB cable in the USB port of the PC/Laptop and the smaller end at the back of the control panel.  
(Fig. 13.A2)

13.B. Software Initialization

B1.

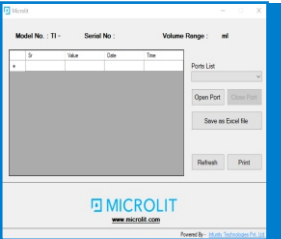
Fig. 13.B1



Double click on the Microlit Communication icon to run the software.  
(Fig. 13.B1)

B2.

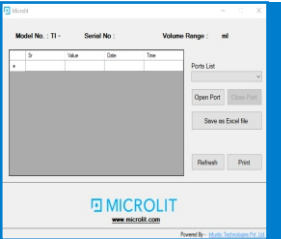
Fig. 13.B2



From the Ports List button, select the port from the drop down menu.  
(Fig. 13.B2)

B3.

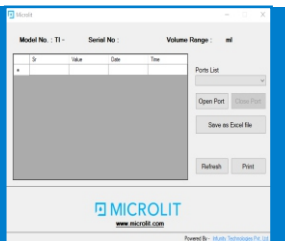
Fig. 13.B3



Click on OPEN PORT.  
(Fig. 13.B3)

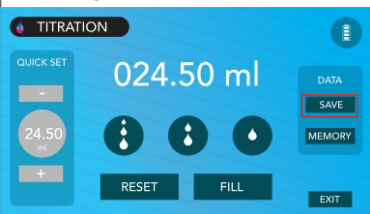
B4.

Fig. 13.B4



The window will capture the model number, serial number and the volume range of the E-BURETTE. (Fig. 13.B4)

B5.



Click SAVE from the titration screen to save the readings from the control panel to the PC/Laptop. (Fig. 13.B5)

Using the 'SAVE' button, the user transfers the value to the Quick Set and PC/Laptop simultaneously. Thereby, saving the records in the memory.

### 13.C. Memory

C1.



Click MEMORY from the titration screen to see the saved readings. (Fig. 13.C1)

The memory screen displays the last 20 saved readings with real date and time.

Note: This is a flash memory and the readings will be automatically erased if the panel is switched off.

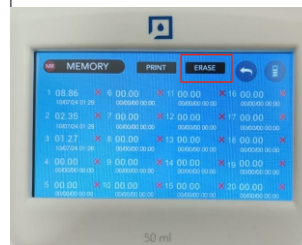
C2.



The user can delete the individual reading by clicking the 'X' symbol along the reading. (Fig. 13.C2)



C3.



The user also has the provision to erase all readings together by clicking 'ERASE' button. (Fig. 13.C3)

ERASE

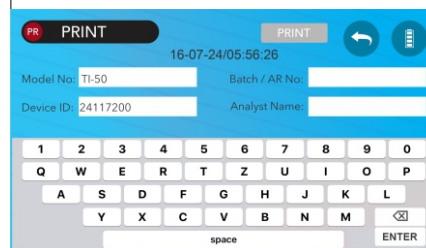
C4.



The user can also take the print of the last 20 readings by clicking on 'PRINT' button. (Fig. 13.C4)

PRINT

C5.



The print screen shows model number and device id of the burette along with the current print date and time. (Fig. 13.C5)

C6.



Once the user enters the Batch No/AR No or add the name of the Analyst, the PRINT button will be enabled. (Fig. 13.C6)

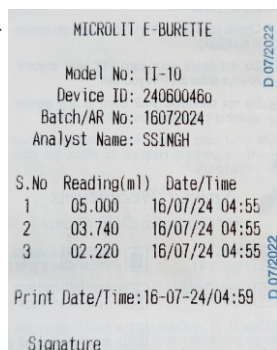


C7.



The printer will print the last performed readings from the memory. (Fig. 13.C7)

C8.



The printed slip will have the Model No., Device ID, Batch/AR No., Analyst Name, Saved Readings with their real date and time, print date and time. The user can sign the slip and file it in their record. (Fig. 13.C8)

Note: Once the user has entered the detail, they need not re-enter it but can edit it.

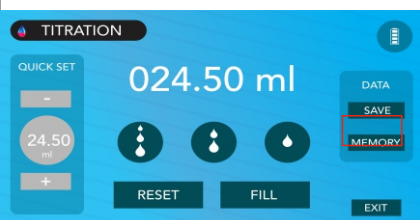
C9.



If the printer is not connected to the panel, the error message will be displayed. (Fig. 13.C9)

### 13.D. Exit

D1. To end working with the E-BURETTE, press the Exit button. (Fig. 13.D1)



The panel will warn the user to turn the knob in the re-circulation mode.

Click on the tick (✓) button to proceed. The piston will empty the barrel and go to the home position.

Press the ON/OFF button to switch OFF the control panel.

## 14.

### Error Limits

The error limits (Accuracy and Coefficient of Variation) mentioned in Product Specifications (Page 1) are in accordance with the nominal capacity (or maximum volume) indicated on the instrument. These are obtained by using the instrument with distilled water at equilibrium, ambient temperature of 20 °C, while operating the device smoothly and steadily.

The error limits are well within the limits of DIN EN ISO 8655-3.

Capacity (ml)	Increment	Accuracy ±%	±ml	CV ±%	±ml
10	5 µl	0.10	0.01	0.1	0.01
25	10 µl	0.07	0.0175	0.05	0.0125
50	10 µl	0.05	0.025	0.05	0.025

## 15.

### Calibration

#### 15.A. User Calibration Procedure

#### 15.B. Factory Reset

#### 15.A. User Calibration Procedure

The E-BURETTE has been laboratory calibrated at its nominal volume. However, due to changes in environmental conditions and the viscosity of the media which is dispensed, we recommend gravimetric testing every 3-12 months. Gravimetric volume testing according to DIN EN ISO 8655-6 is performed as follows:

A1.

Fig. 15.A1



Click the settings icon on the bottom right of the Home Screen. (Fig. 15.A1)

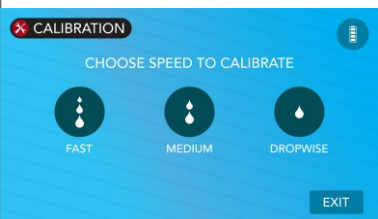
A2.

Fig. 15.A2



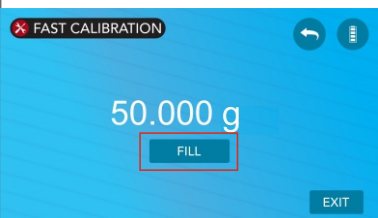
From the settings menu, choose Calibration.  
(Fig. 15.A2)

A3.



If the user is experiencing the calibration issue at any dispensing speed, they can select the speed they want to calibrate. (Fig. 15.A3)

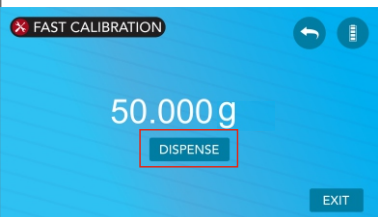
A4.



Fill the nominal volume of double distilled de-ionized water by clicking the FILL button on the calibration screen of the operating panel. (Fig. 15.A4)

FILL

A5.



Dispense the filled liquid by clicking on the DISPENSE button on the calibration screen of the control panel. (Fig. 15.A5)

DISPENSE

A6.



Measure the dispensed liquid on a digital or electronic balance and enter the value in g using the provided electronic keyboard in the burette panel. (Fig. 15.A6)

Note: This procedure is the same for calibrating the burette at fast or medium speed for all volumes.

A7.



### Dropwise Speed Calibration

While calibrating the burette at dropwise speed, a small amount is filled and while dispensing approx 20 drops are dispensed. Now the user needs to enter the dispensed amount displayed on the balance.

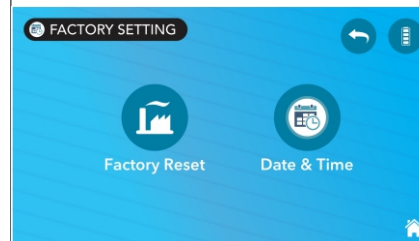
Click the tick mark (✓) to proceed. (Fig. 15.A7)

Note: CAL label will start appearing on top of all screens depicting that calibration has been performed.

A8. Repeat this procedure until the nominal volume is achieved on the electronic balance.

## 15.B. Factory Reset

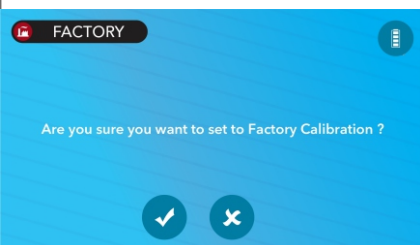
B1.



To reset the default factory calibration settings, the user needs to go to the factory reset under factory settings. (Fig. 15.B1)



B2.



Click the tick mark (✓) to reset the calibration to the original factory and CAL will disappear from all the screens. (Fig. 15.B2)

## 16. Other Settings

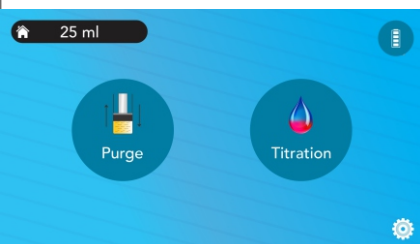
### 16.A. Control Panel & Brightness Setting

#### 16.B. Language Setting

#### 16.C. Date And Time Settings

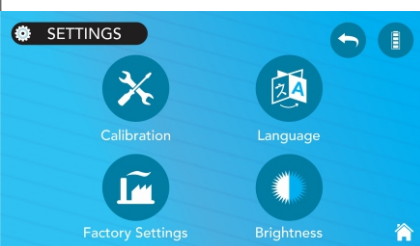
### 16.A. Control Panel & Brightness Setting

A1.



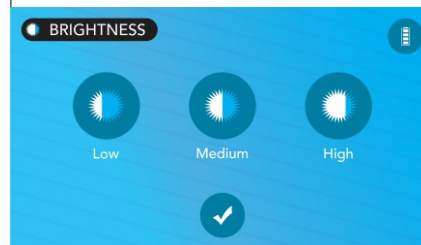
Click on the settings icon from the home screen. (Fig. 16.A1)

A2.



In the setting windows. click the BRIGHTNESS icon. (Fig. 16.A2)

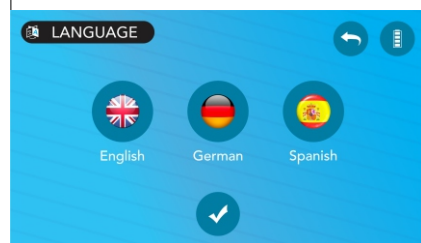
A3.



From the BRIGHTNESS window. select the level of brightness and tick mark to save it. (Fig. 16.A3)

### 16.B. Language Setting

B1.



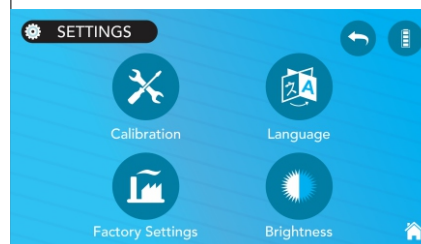
User can select the preferred language from the language settings. (Fig. 16.B1)

Select the preferred language from the tab by clicking on it and tick mark (✓) to save it.

MICROLIT E-BURETTE supports three languages - English, German, Spanish

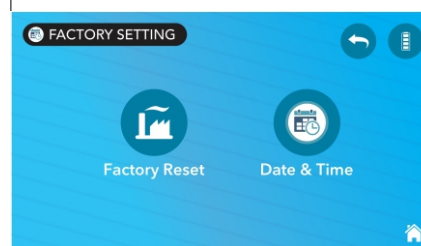
### 16.C. Date And Time Settings

C1.



In the settings window, click the factory settings icon. (Fig. 16.C1)

C2.



In the factory settings, select the Date & Time (Fig. 16.C2)

C3.



Now the user can set and change the date and time settings using the provided electronic keyboard. (Fig. 16.C3)

## 17. Cleaning and Product Maintenance

Whenever cleaning is required, run the Burette under distilled water.

Fill the barrel completely with distilled water and press the fast dispense button to dispense the water completely.

### Procedure to Disassemble the Delivery Pipe:

Fig. 17.1

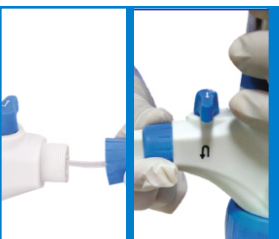


Unscrew the chuck nut by rotating it in anticlockwise direction and pull out the delivery pipe. (Fig. 17.1)

Clean the delivery pipe with de-ionized water.

### Procedure to Assemble the Delivery Pipe:

Fig. 17.2



First push the delivery pipe into the lower housing till it stops going in further. (Fig. 17.2)

Screw the chuck nut to complete the assembly by turning it in clockwise direction. (Fig. 17.2)

Note: Use rubbing alcohol on a cloth or cotton to clean the external body.

## 18. Troubleshooting

Problem	Possible cause	Solution
Piston difficult to move	Formation of crystals or deposition of dirt	Perform a cleaning cycle.
Filling not possible	Filling valve stuck	Clean the filling valve. If the valve ball is stuck, use a 200 µl plastic tip to loosen it. (Fig. 18.1)
Air bubbles in the instrument	Purging not complete	Purge the instrument again.
	Filling tube loose or damaged	Fasten the telescopic filling tube firmly. If necessary, cut the tube off by approx. 1 cm from the top or replace it.
	Filling tube does not dip into the liquid	Fill up the bottle, or correctly adjust the length of the telescopic filling tube.
The volume delivered is smaller than that indicated	The instrument has not been completely primed	Prime the instrument again.
The instrument doesn't indicate any function	Internal error	Perform a restart.
One touch one drop dispensing not working	Instrument not purged	Ensure no air bubble in the delivery tube or barrel, purge correctly.
	Using dropwise dispensing button directly after filling the burette	After each fill, use either fast or medium button to dispense a small amount then use dropwise dispensing
Reading is not being transferred from burette panel to the software	Driver is missing	Install the driver provided with the setup file

Fig. 18.1



	Cable is not connected or damaged	Check for the connection and if cable is damaged, request your nearest dealer/manufacturer
Unable to print the record	Check for printer connection or damaged printer cable/connection	Ensure that printer cable is connected to the panel. If the connection is correct, check with your nearest dealer/manufacturer.

## 19. Return for Repairs

1. Clean and decontaminate the instrument carefully.
2. Always mention the exact description of the type of malfunction and the media used. Please note that if information regarding media used is missing, the instrument cannot be repaired.
3. Shipment is at the risk and the cost of the sender.

## 20. Calibration Guidelines

ISO 9001 and GLP-guidelines require regular examinations of your volumetric instruments. We recommend checking the volume every 3-12 months. The interval depends on the specific requirements of the instrument. For instruments frequently used or in use with aggressive media, the interval should be shorter.

## 21. Warranty

MICROLIT shall not be liable for the consequences of improper handling, use, servicing, operation or unauthorized repairs of the instrument or the consequences of normal wear and tear, especially of wearing parts such as pistons, seals, valves and the breakage of glass as well as the failure to follow the instructions of the operating manual.

We are not liable for damage resulting from any actions not described in the operating manual or non-original spare parts or components being used.

## 22. Disposal



The adjoining symbol means that storage batteries and electronic devices must be disposed of separately from household trash (mixed municipal waste) at the end of their service life.

- According to the Directive 2002/96/EC of the European Parliament and of the Council on Waste Electrical and Electronic Equipment (WEEE) published on 27 January 2003, electronic equipment requires disposal according to the relevant national disposal regulations.
- Batteries contain substances that can have harmful effects on the environment and human health. Therefore, according to the Directive 2006/66/EC of the European Parliament and the Council on Waste Batteries of 6 September, 2006, batteries require disposal according to the relevant national disposal regulations. Dispose the batteries only when they are completely discharged. Do not short-circuit the battery to discharge it. Subject to technical modifications without notice. Errors accepted.